

/// L200



The L200 safety locking device designed for highly demanding applications is predestined for guarding large protective doors and sliding gates, in logistics operations, for example, or with very big machinery, and under harsh conditions.



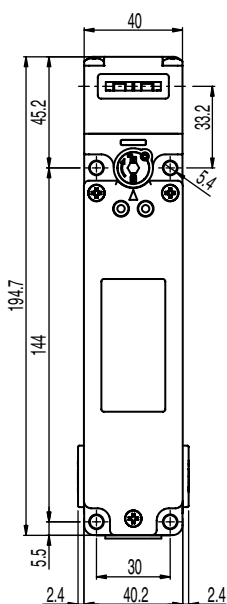
Benefits:

- Heavy duty access guarding on big machinery and systems in harsh ambient conditions
- Emergency unlock function (ergonomically optimized panic button) for manually opening the protective devices in the event of an emergency
- Suitable for extreme mechanical loads
- Auxiliary unlocking (for spring locking)
- LED status indicators

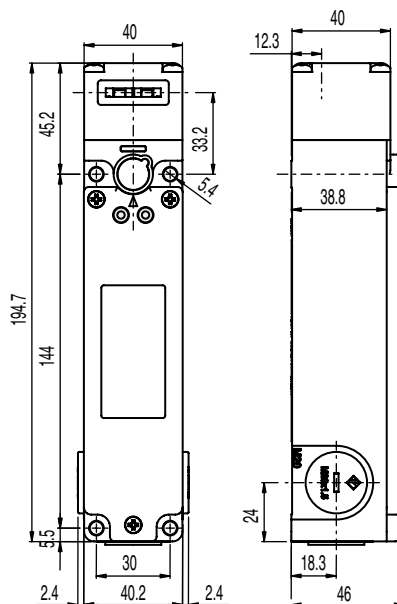
Part no.	Part description	Contact allocation	Housing material	Connection	Cable entry	Approach actuation directions	Locking actuation	Locking type
63000653	L200-M0C3-SLM24-L2G	1NC + 1NO, 1NC + 1NO, slow-action contact	Metal	Terminal, screw terminal, 10-pin	3x, M20 x 1.5	4 x lateral (90 °), 1 x top	Spring	Spring force
63000650	L200-M1C3-SLM24-L2G	1NC + 1NO, 2NC, slow-action contact	Metal	Terminal, screw terminal, 10-pin	3x, M20 x 1.5	1 x top, 4 x lateral (90 °)	Spring	Spring force
63000652	L200-M1C3-SLM24-PB-L2G	1NC + 1NO, 2NC, slow-action contact	Metal	Terminal, screw terminal, 10-pin	3x, M20 x 1.5	1 x top, 4 x lateral (90 °)	Spring	Spring force
63000651	L200-M1C3-MLM24-L2G	1NC + 1NO, 2NC, slow-action contact	Metal	Terminal, screw terminal, 10-pin	3x, M20 x 1.5	1 x top, 4 x lateral (90 °)	Magnet	Electromagnetic

Note: Actuators must be ordered separately!

Dimensioned drawings: L200



L200-M1C3-SLM24-L2G safety locking device



L200-M1C3-MLM24-L2G safety locking device

Switching sensors

Measuring sensors

Products for safety at work

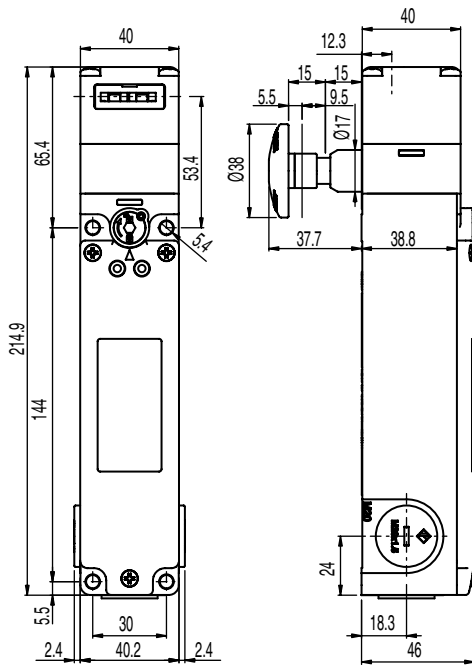
Identification

Data transmission / Control components

Industrial image processing

Accessories

Dimensioned drawings: L200



L200-M1C3-SLM24-PB-L2G safety locking device

ACCESSORIES: L200

Connection technology

Adapter

Part no.	Part description	Design
63000843	AC-A-M20-12NPT	M20 × 1,5 on 1/2 NPT

Actuator

Part no.	Part description	Design	Mounting bore holes	Material	Type of fastening	Description
63000741	AC-AHL-A	Angled	In key direction	Stainless steel	Through-hole mounting	
63000743	AC-AHL-F4J2-TK	Straight	90° to key direction	Stainless steel	Through-hole mounting	Functions: flexible, 4 directions, rotatable head, key, adjustable, 4 directions
63000742	AC-AHL-RM	Straight	90° to key direction	Stainless steel	Through-hole mounting	Functions: rubber-mounted fastening
63000740	AC-AHL-S	Straight	90° to key direction	Stainless steel	Through-hole mounting	
63000847	AC-KL-AHL			Metal		Actuator interlock

Mounting

Part no.	Part description	Description	Dimension
63000749	AC-Exit-PB	Stick-on label; labeled: "PUSH TO EXIT"	300 mm
63000750	AC-PB15-L200	Extension	17 mm × 15 mm
63000751	AC-PB30-L200	Extension	17 mm × 30 mm
63000752	AC-PB40-L200	Extension	17 mm × 40 mm
63000753	AC-PB60-L200	Extension	17 mm × 60 mm
63000754	AC-PB500-L200	Extension; length: 60 mm ... 500 mm	